

Impacts of Warming on North America



Laetorius/Getty

Rising seas, retreating sea ice, and thawing permafrost erode coastlines



Courtesy of National Research Council Canada

Sea routes become increasingly navigable



B&C Alexander/Arcticphoto.com

Retreating sea ice reduces seal and polar bear habitat



Guy Brantch

Communities forced to relocate, with associated high costs



B&C Alexander/Arcticphoto.com

Rapid changes threaten traditional ways of life



Courtesy of USDA

Forest pests and diseases increase



Ashley Cooper/Impact/Crisis

Thawing permafrost destabilizes infrastructure



Courtesy of USDA

Altered distribution of insects and rodents that transmit disease



Photo.com

Summer river flow decreases



Courtesy of NPS

Glaciers melt



Jodi Hilton

Winter recreation and tourism suffer



Associated Press

Heat waves increase in number, intensity, and duration



www.arsenova.ru/nobla.gov/dec01

Coastal land is lost, including species-rich wetlands



Courtesy of USDA

Water supply from mountain snowpack declines



AP Photo/Steve Chinnick/Milliam

Wildfire season lengthens; more forest area burns



Picturequest

Agricultural yields increase with small temperature increases, but further warming decreases yields



Associated Press

Heavy precipitation increases flood risk



Courtesy of EPA

Rising temperatures increase smog-related health risks



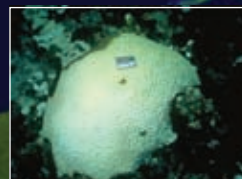
Courtesy of USDA

Extent and duration of droughts increase



Courtesy of NOAA

Risk of harmful algal blooms increases



Courtesy of USGS

Rising water temperatures and acidification kill corals



Getty Images

Intense hurricanes increase

Although IPCC has a global focus, this map highlights some of the impacts for North America. Most of these impacts are already underway and are expected to increase with further warming.