

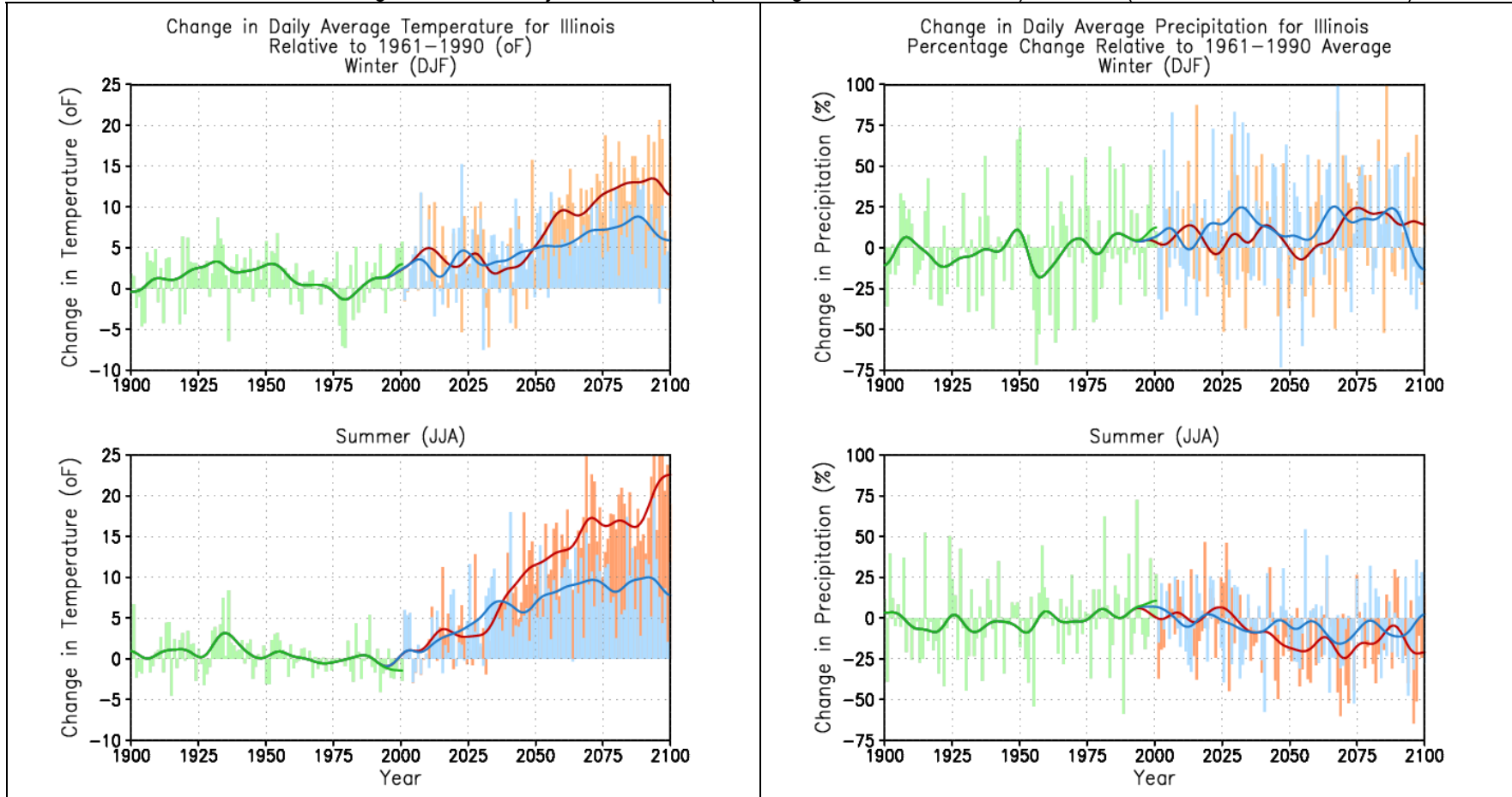
Confronting Climate Change in the Great Lakes Region

Technical Appendix

STATE- AND PROVINCE-SPECIFIC TEMPERATURE AND PRECIPITATION PLOTS

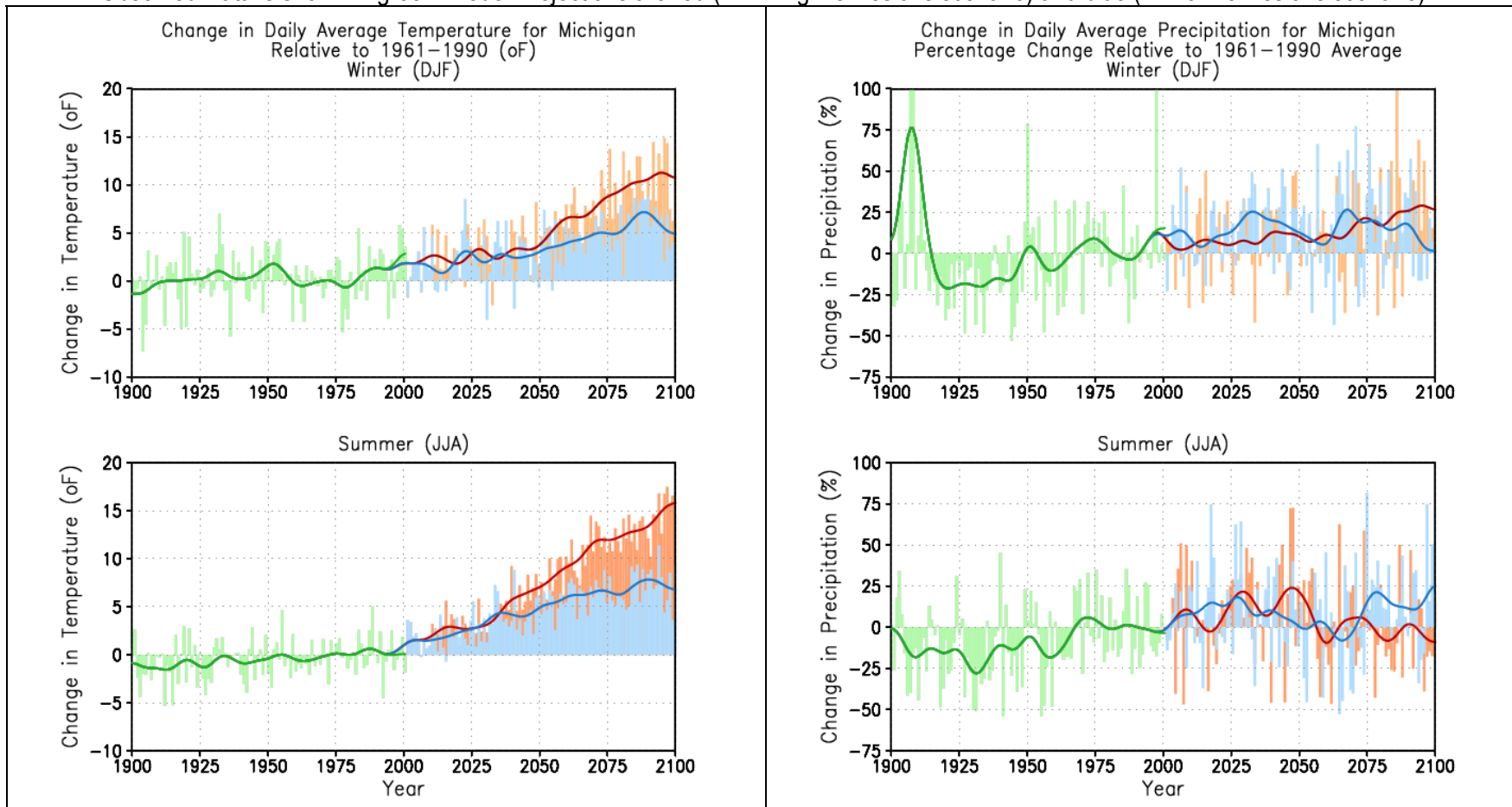
ILLINOIS

Observed Data is shown in green. Model Projections are red (A1FI 'high' emissions scenario) and blue (B1 'low' emissions scenario).



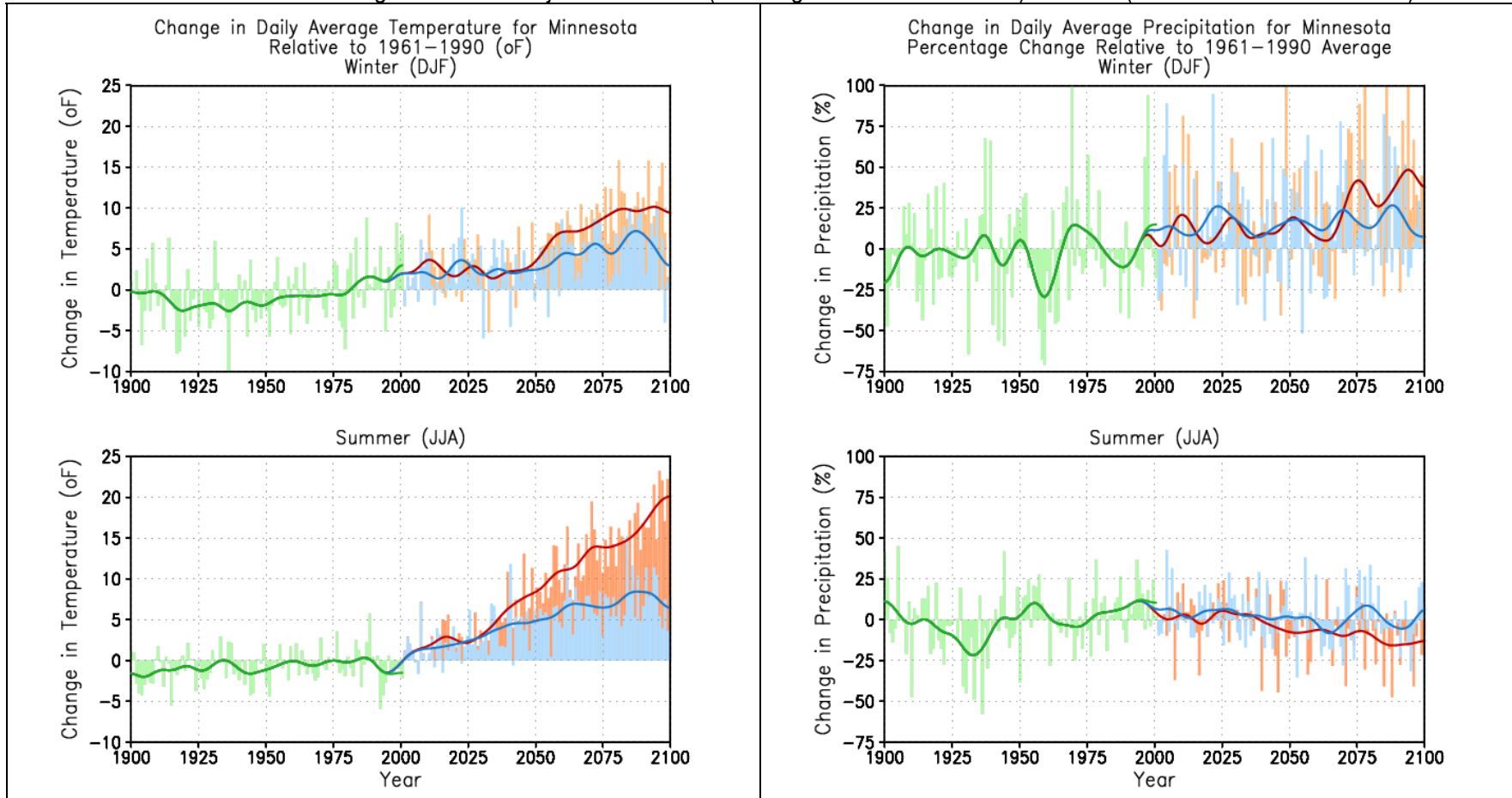
MICHIGAN

Observed Data is shown in green. Model Projections are red (A1FI 'high' emissions scenario) and blue (B1 'low' emissions scenario).



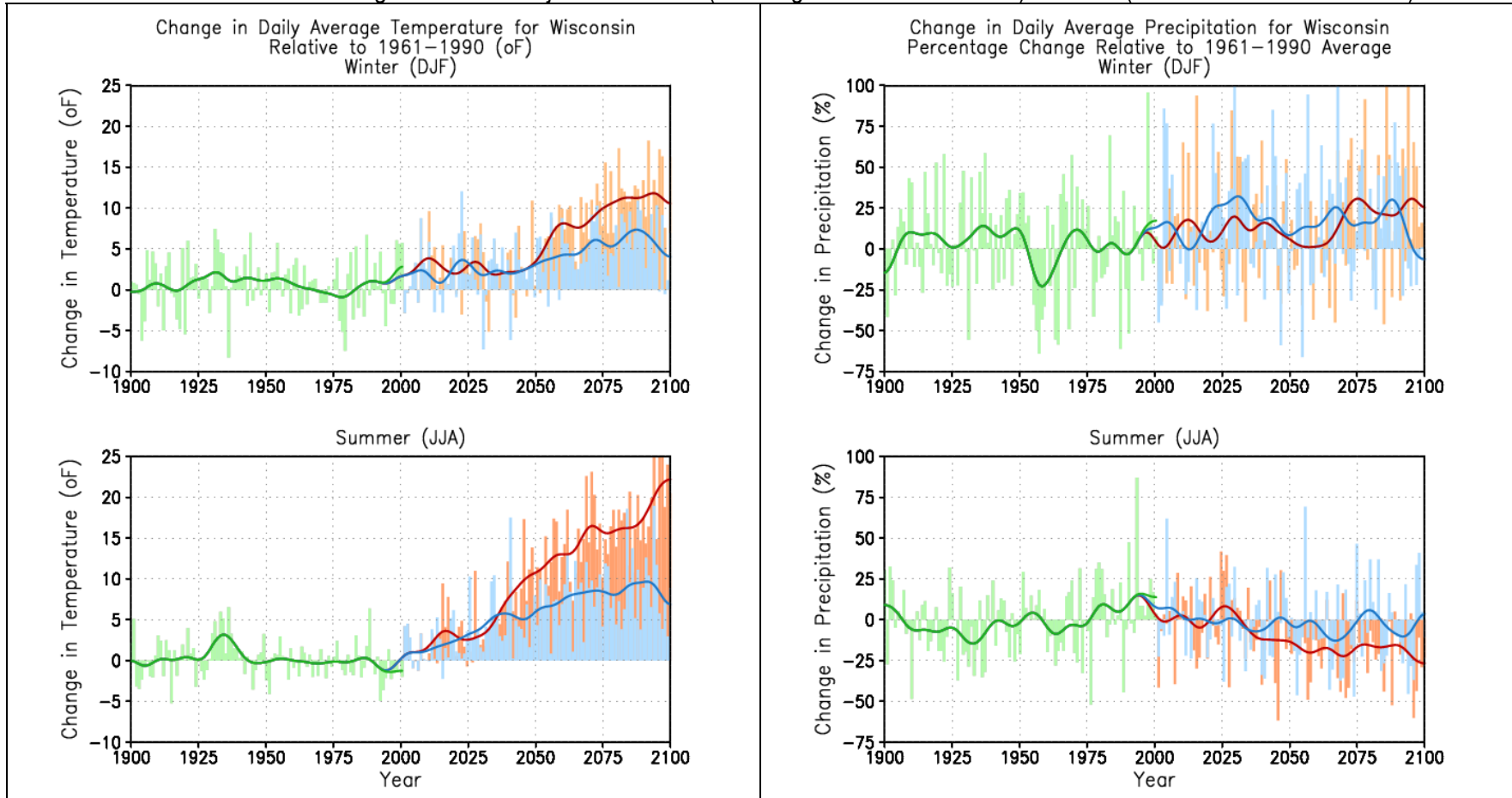
MINNESOTA

Observed Data is shown in green. Model Projections are red (A1FI 'high' emissions scenario) and blue (B1 'low' emissions scenario).



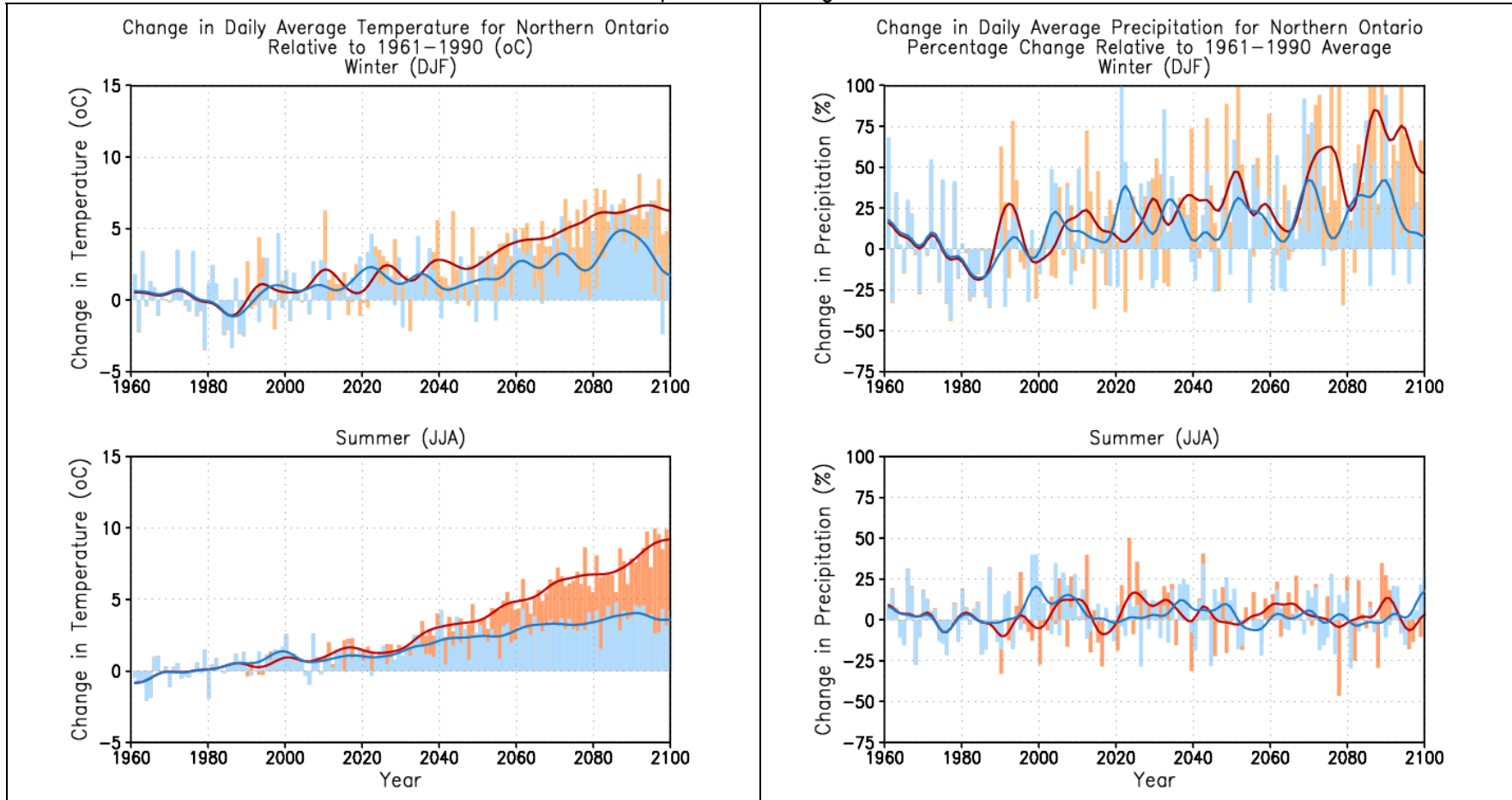
WISCONSIN

Observed Data is shown in green. Model Projections are red (A1FI 'high' emissions scenario) and blue (B1 'low' emissions scenario).



NORTHERN ONTARIO (between 46°-53°N)

No observed data available. Model Projections are red (A1FI 'high' emissions scenario) and blue (B1 'low' emissions scenario).
Note: temperature is in degrees Celsius



SOUTHERN ONTARIO (below 46°N)

No observed data available. Model Projections are red (A1FI 'high' emissions scenario) and blue (B1 'low' emissions scenario).
Note: temperature is in degrees Celsius

