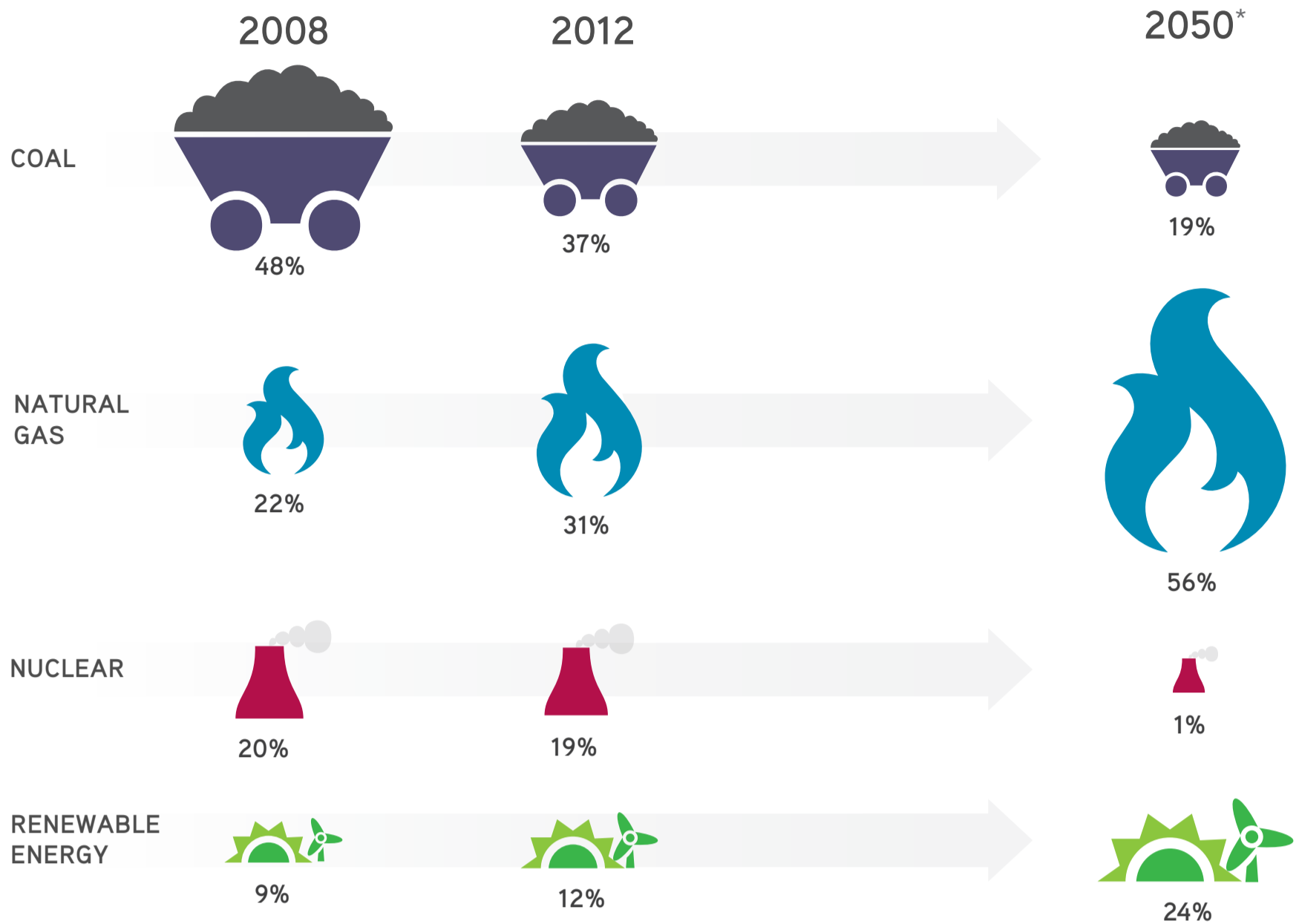


THE CLIMATE RISKS OF NATURAL GAS

THE U.S. ELECTRICITY SYSTEM IS GOING THROUGH ITS BIGGEST TRANSFORMATION IN HALF A CENTURY

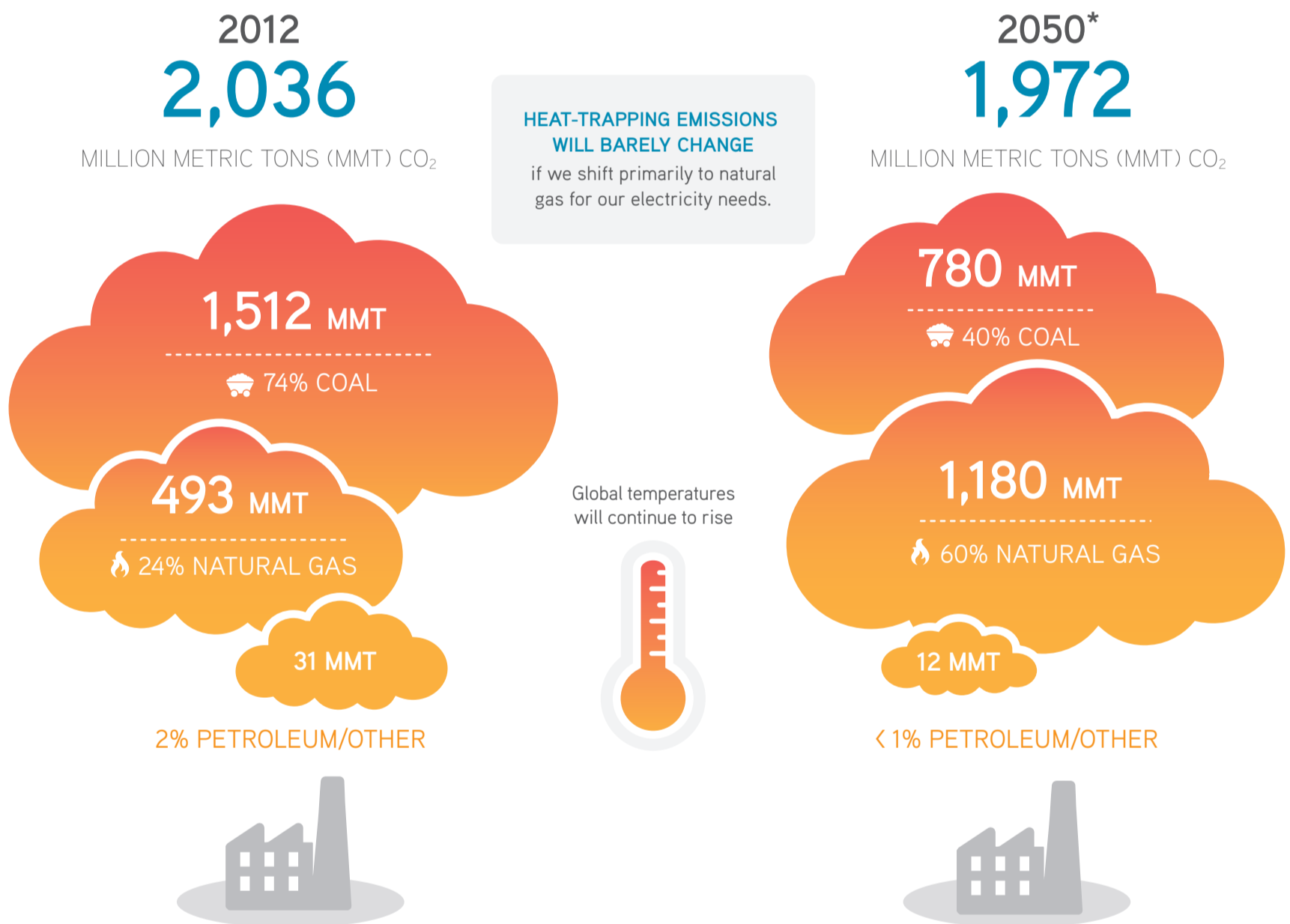
Old and inefficient COAL PLANTS ARE CLOSING. The choices we make to replace them will determine our electricity sources for the next 30 – 50 years. Right now WE ARE MOVING TOWARD A NATURAL GAS-DOMINATED ELECTRICITY SYSTEM.

U.S. ELECTRICITY MIX



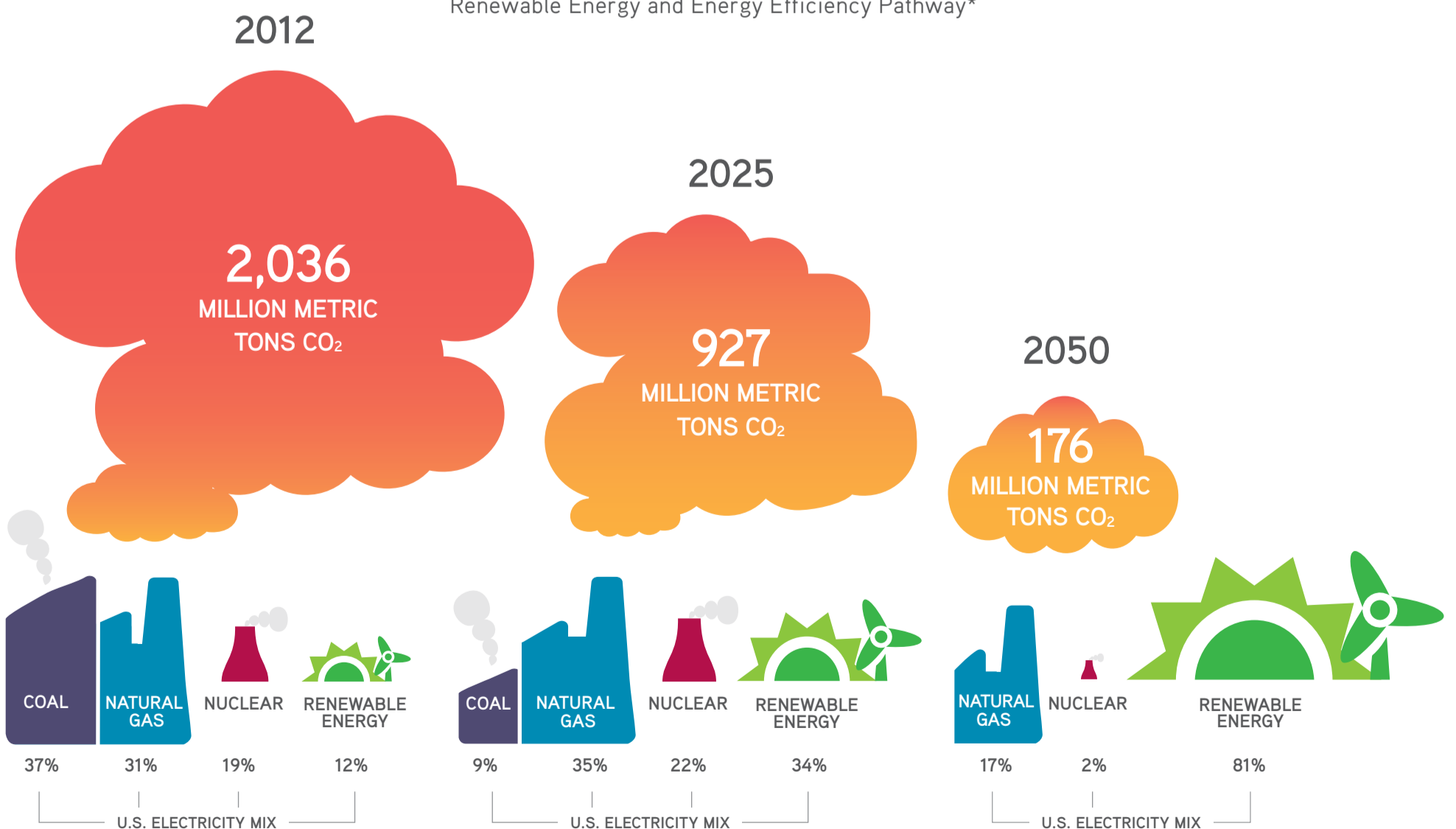
A NATURAL GAS-DOMINATED ELECTRICITY SYSTEM WOULD CONTINUE TO HEAT UP THE PLANET

U.S. EMISSIONS FROM ELECTRICITY PRODUCTION



PRIORITIZING RENEWABLE ENERGY AND ENERGY EFFICIENCY TODAY CAN DRAMATICALLY REDUCE GLOBAL WARMING EMISSIONS

U.S. EMISSIONS FROM ELECTRICITY PRODUCTION Renewable Energy and Energy Efficiency Pathway*



Improved energy efficiency would reduce projected U.S. electricity demand in 2050 by **BY MORE THAN 30%**.

*Based on UCS-led analysis using the National Renewable Energy Laboratory's Regional Energy Deployment System (ReEDS) model. Panels 1 and 2 assume no changes to existing state and federal policies.